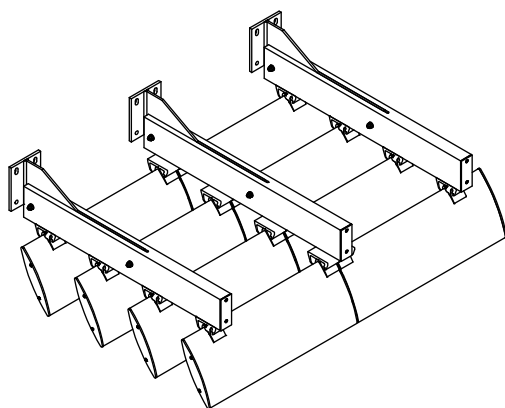
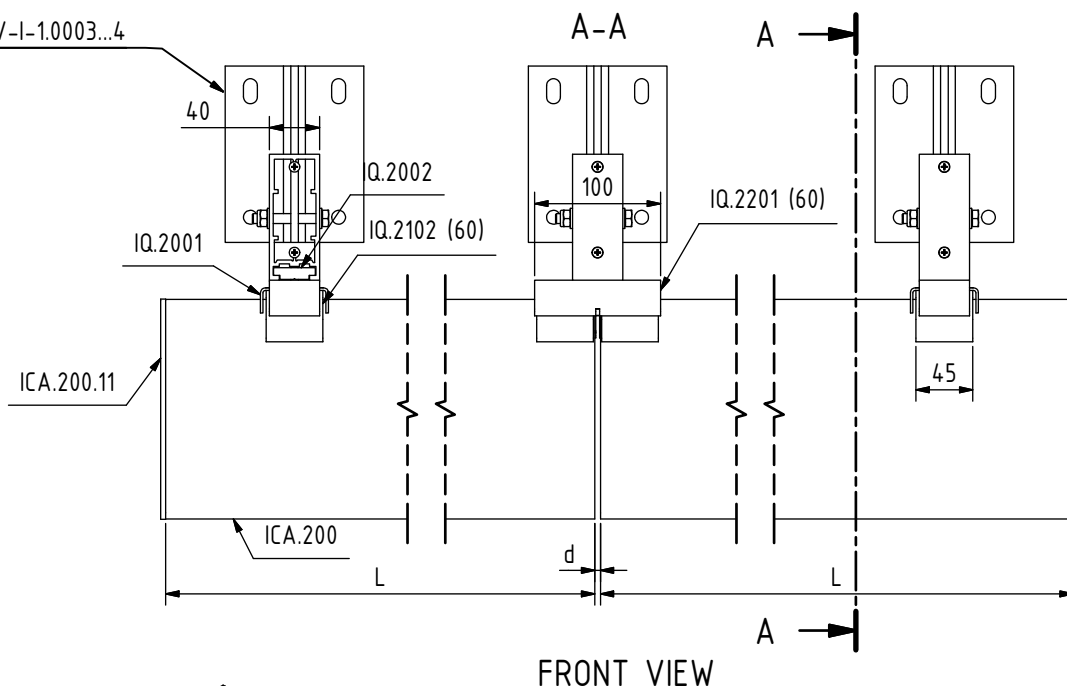


See HV-I-1.0003...4



KEY REFERENCE

- L: Length of blade [mm]
- d: Expansion joint [mm]
= 0,001 x L
- s: Step of blade [mm]
- a: Min. sun entrance angle [°]
- U: Projection [mm]
- y: ≥ 80 mm
- n: Number of blades
- C: Projection knife [mm]

Maximal dimensions to be discussed with R&D Dept. of NV Renson Projects.



RENSON
Creating healthy spaces

RENSON FABRICATIONS Ltd
Fairfax Units 1-2-3
Bircholt Rd. - Parkwood I.E.
Maidstone, Kent, ME15 9SF

Tel.: 01622 754123
Fax: 01622 689478
www.renson.eu

HORIZONTAL FIXED

TYPE: ICARUS

SUBTYPE: QUICKFIX

DESCRIPTION: ICA.200 (45°) + SD.100 ON BLADE

PRODUCT SHEET

SHEET N°

HV-I-1.0335

ISSUE

V.02

Scale:
1/6

Orig. format:
A4

All rights reserved to NV RENSON PROJECTS. This drawing shall not be copied nor showed to third parties without written permission of NV RENSON PROJECTS.

R:\CAD\191_ProductFiches\HV\HV-I-1.0335-RF-idw